



FORD & PARTNERS

ESTATE AGENTS



Skyline Mews, 10 Cressex Road, High Wycombe, HP12 4FE

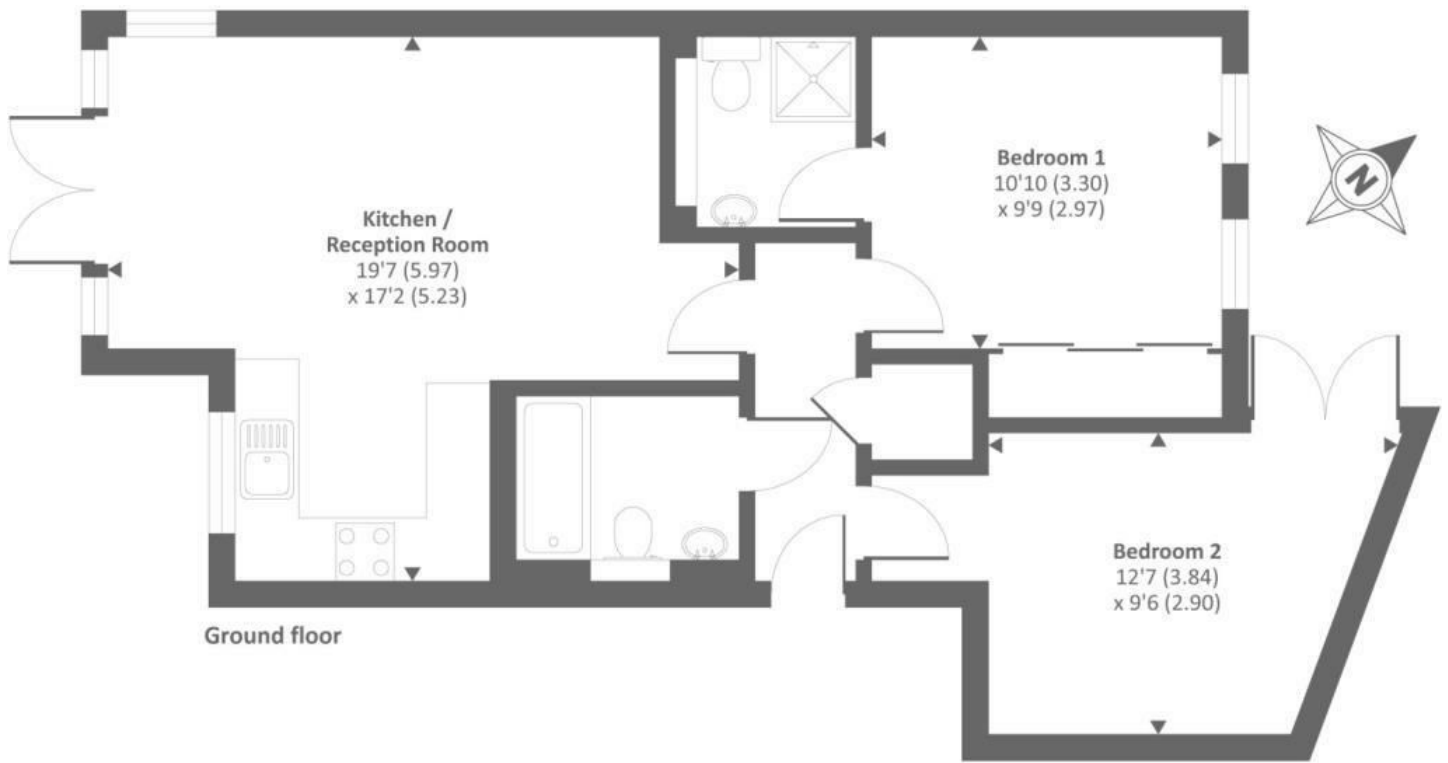
Available Immediately

Located in a quiet, securely gated development, this well-presented two-bedroom, two-bathroom ground-floor apartment features two double bedrooms, an en-suite and family bathroom, and a modern open-plan kitchen/living area. The property also benefits from a private rear terrace and communal gardens.

Conveniently situated near local amenities, Junction 4 of the M40, and High Wycombe town centre, with its Eden Shopping Centre, restaurants, theatre, and mainline train station.

£1,500 Per month

- **Modern Ground Floor Apartment**
- **Two Bedrooms**
- **Master Bedroom w/ En Suite**
- **Open Plan Living Room/Kitchen**
- **Private Rear Terrace/Garden**
- **Patio Area from Lounge**
- **Allocated Parking**
- **Secure Gated Development**
- **Gas Central Heating & UPVC Double Glazing**
- **Available Immediately!**



Approx. gross internal floor area 644 SQFT / 59.8 SQM

Energy Efficiency Rating		
	Current	Potential
Very energy efficient - lower running costs		
(92 plus) A		
(81-91) B		
(69-80) C		
(55-68) D		
(39-54) E		
(21-38) F		
(1-20) G		
Not energy efficient - higher running costs		
England & Wales	EU Directive 2002/91/EC	

Environmental Impact (CO ₂) Rating		
	Current	Potential
Very environmentally friendly - lower CO ₂ emissions		
(92 plus) A		
(81-91) B		
(69-80) C		
(55-68) D		
(39-54) E		
(21-38) F		
(1-20) G		
Not environmentally friendly - higher CO ₂ emissions		
England & Wales	EU Directive 2002/91/EC	

